

# FONTANA

---

Model No. 1460

## DESIGN GEORG APPELTSHAUSER

A new generation of extendable dining tables. FONTANA combines the uniqueness of natural stone with the experience of an innovative synchronous mechanism. Unfold the table to a banquet - effortless and apparently magical. DRAENERT typical - the expressive, trapezoidal table top adds the finishing touch. The FONTANA has received four awards! The collection is complimented by a fix top version.

### FONTANA - Four times awarded

Check out the function as a [video!](#)

### AVAILABLE IN THE FOLLOWING MATERIAL VARIANTS:

Stone



**1460 FONTANA**

DIFFERENT VERSIONS OF THE BASE



table extendable

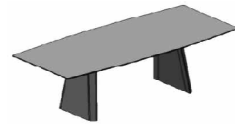


table not extendable

**base 1**

**side walls (standard)**

solid oak  
cross section of side walls below 60.3 x 6.6 cm

space between the side walls 121.5 cm

solid oak  
cross section of side walls below 60.3 x 6.6 cm

space between the side walls  
with a table length of  
160 cm = 80 cm  
180 cm = 90 cm  
200 cm = 100 cm  
220 cm = 120 cm  
240 cm = 130 cm  
260 cm = 150 cm  
280 cm = 170 cm

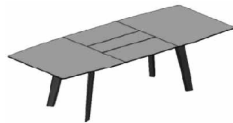


table extendable



table not extendable

**base 2**

**four legs (with surcharge)**

conical legs solid oak  
cross section of legs below 9.3 x 6 cm

space between the legs below 147 cm

conical legs solid oak  
cross section of legs below 9.3 x 6 cm

space between the legs below  
with a table length of  
160 cm = 132 cm  
180 cm = 152 cm  
200 cm = 172 cm  
220 cm = 192 cm  
240 cm = 212 cm  
260 cm = 232 cm  
280 cm = 252 cm

**FONTANA 1460**

DIFFERENT SHAPES OF THE TABLE TOPS

**rectangular**



table  
not extended

**trapezoidal shape**

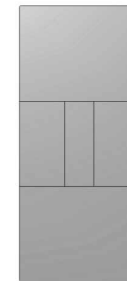
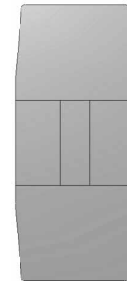


table  
extended



Width of the table at the headside for table size  
105 x 180 / 260 cm = approx. 94.6 cm  
105 x 200 / 280 cm = approx. 93.8 cm



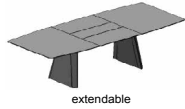
table  
not extendable



Width of the table at the headside for table size  
95 x 160 cm = approx. 86.8 cm  
105 x 180 cm = approx. 95.8 cm  
105 x 200 cm = approx. 94.5 cm  
105 x 220 cm = approx. 93.6 cm  
105 x 240 cm = approx. 92.6 cm  
105 x 260 cm = approx. 91.5 cm  
105 x 280 cm = approx. 90.4 cm

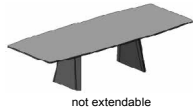


Model type	Pedestal	Size
	base 1 side walls solid wood oak natural / pigmented white dark gray / dark oak standard	W - L - H approx. in cm



1460 dining table trapezoidal shape, rectangular <b>extendable</b> with integrated threefold extension stone 80 cm	105 x 180 x 74.5 extended 105 x 260 x 74.5
--	--

1460 dining table trapezoidal shape, rectangular <b>extendable</b> with integrated threefold extension stone 80 cm	105 x 200 x 74.5 extended 105 x 280 x 74.5
--	--



1460 dining table trapezoidal shape, rectangular <b>not extendable</b>	95 x 160 x 74 105 x 180 x 74 105 x 200 x 74 105 x 220 x 74 105 x 240 x 74 105 x 260 x 74 105 x 280 x 74
--	---



base 1 - standard  
side walls in oak



base 2  
four legs in oak

Top	Top	Top	Top	Top	Top	Top
stone 2 cm edge 6 PG 2	stone 2 cm edge 6 PG 3	stone 2 cm edge 6 PG 4	stone 2 cm edge 6 PG 4a	stone 2 cm edge 6 PG 4b	stone 2 cm edge 6 PG 5	stone 2 cm edge 6 PG 6

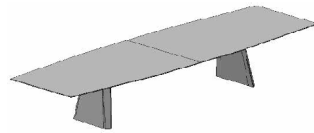
**Price supplements for special orders:**

base 1	solid oak stained or open porous lacquered to RAL as desired
base 2	solid oak natural, pigmented white, dark gray, dark oak
base 2	solid oak stained or open porous lacquered to RAL as desired

# 1460 FONTANA CONFERENCE

NATURAL STONE

DESIGN GINO CAROLLO 2018



**Dimensions** FONTANA Conference is an elegant conference and meeting table. As the top only rests on two wood-paneled side walls, the maximum dimensions are limited. Kindly ask for your preferred size. Due to the great number of variancies, we may not state any prices here. On the opposite page, you will find an overview of the variants in dimensions and bases.

**Table top** We offer 150 different types of natural stones (page 4-5). Alternatively, we offer veneer and solid wood panels. Dimensions on request.



**Table top edges**



edge 4



edge 5



edge 6

**Table top shapes**



rectangular



trapezoidal



boat-shaped



organic

**Bases**

**base 1 standard** side walls oak-paneled in:  
 - oak natural, pigmented white, dark gray, dark oak  
 - lacquered to RAL  
 cross section below 60.3 x 6.6 cm  
 space between the side walls depending on table size

**base 1 reinforced** side walls oak-paneled in:  
 - oak natural, pigmented white, dark gray, dark oak  
 - lacquered to RAL  
 The internal construction and the interconnections are reinforced.  
 cross section below 60.3 x 6.6 cm  
 space between the side walls depending on table size

**Attention!** The base structure of stone tops is equipped with a continuous metal frame. The metal frame is in width and length about 30cm shorter than the table top.

**Options** We offer different systems for media flaps / service panels and cable routing for power and data connection.



**Note:** Feasibility and prices on request. We will gladly design your custom-made conference table. Please feel free to contact us.

# FONTANA CONFERENCE 1460

NATURAL STONE

Base	Top(s)	Width approx. in cm	Length approx. in cm	Height approx. in cm
base 1 standard	1	95 - 115	150 - 300	74



base 1 reinforced	2	110 - 130	280 - 400	74
-------------------	---	-----------	-----------	----

